

General Accessories

Hardware

General Accessories
Hardware

Heavy Duty Door Clamping Hardware



- Replacement hardware for use on all 1418 and 1447 Series enclosures.
- Formed heavy gauge stainless steel clamp with stainless steel hardware.
- Sold in sets of two.

| | |
|----------|-----------------|
| Part No. | 1481HC18 |
|----------|-----------------|

Junction Box Padlock Kit



- Field installed kit requires drilling of only 4 holes
- Compatible with 1414 Series junction boxes.
- Only available in 316 Stainless Steel.
- Sold Individually.
- Installation Instructions provided

| | |
|----------|-----------------|
| Part No. | 14PLKS16 |
|----------|-----------------|

Quick Release Clamp



- Provides fast access to conventional screw clamp type enclosures.
- Installs on clamp bracket in place of screw on 1418, 1418N4, 1447N4, and 1422N4 Series enclosures.
- Entire assembly is stainless steel.
- Set of two.

| | |
|----------|---------------|
| Part No. | 1418QR |
|----------|---------------|

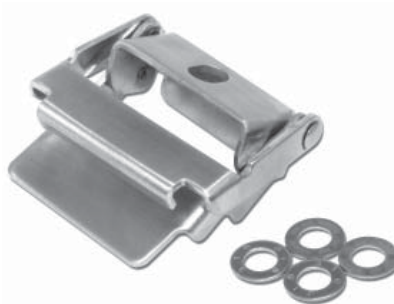
Door Clamping Hardware



- Replacement hardware for use on 1414, 1485, 1486, and 1487 Hammond enclosures.
- Formed heavy gauge stainless steel.
- Set of two

| | |
|----------|----------------|
| Part No. | 1481C14 |
|----------|----------------|

Quick Release Junction Box Clamp



- Installs easily on standard clamp bracket allowing for quick access.
- Compatible with 1414 Series junction boxes. Also 1485 Series wireway and 1486 trough.
- Available in plated or stainless steel.
- Sold Individually.

| Part No. | Material |
|----------------|--------------|
| 14QR | Plated Steel |
| 14QRSS | 304 SS |
| 14QRS16 | 316 SS |

Lifting or Pull Handles



- Chrome plated steel accessory handles.
- Two 10-32 screws on 1427L, M, and N; 6-32 screws on 1427P and Q.
- Additional sizes available. Consult factory.

| Part No. | Mtg. Centers | Handle Diameter |
|--------------|--------------|-----------------|
| 1427L | 7.00 | 0.375 |
| 1427M | 5.25 | 0.375 |
| 1427N | 3.50 | 0.375 |
| 1427P | 2.81 | 0.250 |
| 1427Q | 2.25 | 0.250 |

 Technical references and CAD downloads available at www.hammondmfg.com

All dimensions in inches unless specified otherwise

Handle Kits for Type 4 and 4X Enclosures



- Durable zinc die cast or stainless steel
- Removable handle stop for clockwise / counter-clockwise operation
- Textured powder coat Black finish on zinc cast handle
- Maintains NEMA rating of enclosure
- Padlock “trigger” design for security requirements
- Optional key lock or defeater available
- Handle can be used on other Hammond enclosures as field installation or installed at factory ... contact Hammond

| Part No. | Description | Material | NEMA Rating |
|----------------|-------------------------------------|----------|-------------|
| MHK1 | 6" PADLOCKING 1PT. LATCH | Zinc | 4 |
| MHK2 | 6" PADLOCKING 3PT < 60" | Zinc | 4 |
| MHK3 | 6" PADLOCKING 3PT > 60" | Zinc | 4 |
| MHKD1 | 6" PADLOCKING DEFEATER 1PT LATCH | Zinc | 4 |
| MHKD2 | 6" PADLOCKING DEFEATER 3PT < 60" | Zinc | 4 |
| MHKD3 | 6" PADLOCKING DEFEATER 3PT > 60" | Zinc | 4 |
| MHKL1 | 6" KEYED PADLOCKING 1PT LATCH | Zinc | 4 |
| MHKL2 | 6" KEYED PADLOCKING 3PT < 60" | Zinc | 4 |
| MHKL3 | 6" KEYED PADLOCKING 3PT > 60" | Zinc | 4 |
| MHK1SS | 6" SS PADLOCKING 1PT LATCH | 316 SS | 4X |
| MHK2SS | 6" SS PADLOCKING 3PT LATCH < 60" | 316 SS | 4X |
| MHK3SS | 6" SS PADLOCKING 3PT LATCH > 60" | 316 SS | 4X |
| MHKD1SS | 6" SS PADLOCKING DEFEATER 1PT LATCH | 316 SS | 4X |
| MHKD2SS | 6" SS PADLOCKING DEFEATER 3PT < 60" | 316 SS | 4X |
| MHKD3SS | 6" SS PADLOCKING DEFEATER 3PT > 60" | 316 SS | 4X |
| MHKL1SS | 6" SS KEYED PADLOCKING 1PT LATCH | 316 SS | 4X |
| MHKL2SS | 6" SS KEYED PADLOCKING 3PT < 60" | 316 SS | 4X |
| MHKL3SS | 6" SS KEYED PADLOCKING 3PT > 60" | 316 SS | 4X |

General Accessories

Hardware

Latch Kits for Single Door Type 12 Enclosures

- Designed for field installation on most 1418 Series single door enclosures (does not fit 1418 J Series).
- Available with key locking, padlocking, and non-locking handles.
- Single point kits include a handle and latch cam.
- Three point kits include a handle, latch cam, latch rods and adjustable rod guides.
- Latch rod ends have rollers for easier door closing.
- All parts are plated or painted for corrosion resistance.



| Non-Locking Handle | Handle Rotation | Locking Handle | Handle Rotation | "Tee" Locking Handle | Description |
|--------------------|-----------------|----------------|-------------------|----------------------|-----------------------------|
| AHK1 | clockwise | AHKL1 | counter clockwise | THK1 | 1 point latch |
| AHK2 | clockwise | AHKL2 | counter clockwise | THK2 | 3 point latch 48" and under |
| AHK3 | clockwise | AHKL3 | counter clockwise | THK3 | 3 point latch 60" and over |

| Padlocking Handle | Locking & Padlocking Handle | Description |
|-------------------|-----------------------------|-----------------------------|
| PHK1 | PHKL1 | 1 point latch |
| PHK2 | PHKL2 | 3 point latch 48" and under |
| PHK3 | PHKL3 | 3 point latch 60" and over |



Lock Kit for NEMA 1 Enclosures



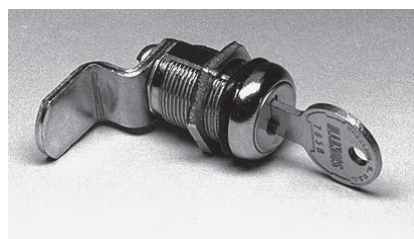
N1JLK



1427LKN1

- Installs in place of the existing slotted latch, or in cutout hole provided.
- Reversible cam position for other applications.
- Maintains NEMA1 rating.

| Part No. | Fits Enclosure Series |
|----------|-----------------------|
| 1427LKN1 | 1420, N1A |
| N1JLK | N1J, CHKO, N1WS, N1WF |



Lock Kit for 1418 Type 4 and 12 Enclosures

- Designed for installation on most 1418 Series single door enclosures (does not fit 1418 J Series).
- Requires a drilled or punched hole to receive cylinder lock.
- Internal "O" ring provides dust and water tight construction.
- Maintains NEMA rating.

| Part No. | 1427LKN4 |
|----------|----------|
|----------|----------|

Technical references and CAD downloads available at www.hammondmfg.com

All dimensions in inches unless specified otherwise

General Accessories

Hardware



| Part No. | Description |
|---------------|------------------------------------|
| 1421 | pkg. of 4 screws & 4 washers |
| 142110 | pkg. of 10 screws & 10 cup washers |
| 142125 | pkg. of 25 screws & 25 cup washers |

Nickel plated 10-32 x 0.63" combo slot, Phillips oval countersunk head screws with steel cup washers.



| Part No. | Description |
|--------------|------------------------------|
| 1421B | pkg. of 4 screws & 4 washers |

Nickel plated 10-32 x 0.5" thumb screws with nylon washers for captivating panels up to 0.09" thick. Head is 0.62" diameter x 0.37" high.



| Part No. | Description |
|----------------|------------------------------------|
| 1421A | pkg. of 4 screws & 4 washers |
| 1421A10 | pkg. of 10 screws & 10 cup washers |
| 1421A25 | pkg. of 25 screws & 25 cup washers |

Nickel plated 10-32 x 0.63" combo slot, Phillips oval countersunk head screws with plastic cup washers.



| Part No. | Description |
|---------------|----------------------------------|
| 1421B2 | pkg. of 2 screws, nuts & washers |

Polished stainless steel 1/4-20 x 0.87" thumb screws with nylon washers and steel nuts for captivating panels up to 0.4" thick. Head is 0.68" diameter x 0.25" high.



| Part No. | Description |
|------------------|--------------------|
| 1421A10B | pkg. of 10 screws |
| 1421A25B | pkg. of 25 screws |
| 1421A100B | pkg. of 100 screws |
| 1421A500B | pkg. of 500 screws |

Nickel plated 10-32 x 0.63" combo slot, Phillips oval countersunk head screws.



| Part No. | Description |
|-----------------|--------------------|
| 1421D | pkg. of 25 screws |
| 1421D100 | pkg. of 100 screws |
| 1421D500 | pkg. of 500 screws |

Zinc plated 10-32 x 0.5" slotted pan head screws.



| Part No. | Description |
|------------------|-------------------------|
| 1421A25W | pkg. of 25 cup washers |
| 1421A100W | pkg. of 100 cup washers |
| 1421A500W | pkg. of 500 cup washers |

Black plastic cup washers for countersunk 10-32 screws.



| Part No. | Description |
|-------------------|----------------------|
| 1421E25W | pkg. of 25 washers |
| 1421E100W | pkg. of 100 washers |
| 1421E500W | pkg. of 500 washers |
| 1421E1000W | pkg. of 1000 washers |

Nickel plated metal cup washers for countersunk 10-32 screws.

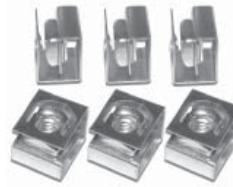
General Accessories

Hardware



| Part No. | Description |
|------------------|------------------------|
| 1421N25 | pkg. of 25 clip nuts |
| 1421N100 | pkg. of 100 clip nuts |
| 1421N250 | pkg. of 500 clip nuts |
| 1421N1000 | pkg. of 1000 clip nuts |

10-32 clip nuts for all panel rails and most other mounting positions. Has the holding strength of a standard 10-32 nut.



| Part No. | Description |
|-------------------|------------------------|
| 1421NP25 | pkg. of 25 clip nuts |
| 1421NP100 | pkg. of 100 clip nuts |
| 1421NP250 | pkg. of 500 clip nuts |
| 1421NP1000 | pkg. of 1000 clip nuts |

Zinc plated 10-32 clip nuts. 10-32 clip nuts for all panel rails and most other mounting positions. Has the holding strength of a standard 10-32 nut.

General Accessories


| Part No. | Description |
|----------------|-------------|
| 1421F25 | pkg. of 25 |

Stainless steel 10-32 x 1.25" Phillips oval countersunk head (the extra length is necessary for raised panels).



| Part No. | Description |
|-----------------|---------------------------|
| 1421K25 | pkg. of 25 screws & nuts |
| 1421K100 | pkg. of 100 screws & nuts |

Zinc plated 1/4-20 x 0.5" slotted round head screws with captive star washer nuts. Supplied with all panel rails and racks.

Hardware


| Part No. | Description |
|--------------|-------------|
| 1463S | pkg. of 3 |

3/8-16 spring loaded nuts and 3/8-16 x 0.75" bolts for "C" channels.



| Part No. | Description |
|--------------|-------------|
| 1421S | pkg. of 4 |

1/4-20 spring loaded nuts and 1/4-20 x 0.62" round head bolts for "C" channels.



UL/CSA Hardware Kits

- When used as instructed, kits maintain the UL/CSA Type rating of Hammond enclosures which unapproved hardware will not.
- Screws require hex driver making them virtually tamper proof.
- Kit includes 50 stainless steel screws, sealing washers and nuts with one hex driver per kit.
- Offered in 8-32, 10-32 and 1/4-20 at various lengths.

| Part No. | Description |
|-------------------|-------------------|
| 1421N4AA50 | 8-32 x 1/2" Kit |
| 1421N4AB50 | 8-32 x 1" Kit |
| 1421N4BA50 | 10-32 x 1/2" Kit |
| 1421N4BB50 | 10-32 x 1" Kit |
| 1421N4CA50 | 1/4-20 x 5/8" Kit |
| 1421N4CB50 | 1/4-20 x 1" Kit |

General Accessories

Hardware



Ground Lugs

- Dual L16 type aluminum lug
- 1 1/8" wide x 1 3/16" long
- Provides excellent grounding
- Accepts wire sizes from 1/0 to 14
- Usually used in conjunction with bus bar
- Packaged individually
- Mounting hardware not included (requires drilling of bus bar)

| | |
|----------|-------------|
| Part No. | DNGL |
|----------|-------------|



Quarter Turn Inserts and Keys

- For Eclipse Enclosures
- Field installable inserts replace standard quarter turn slot.
- Available in 7mm square and triangle formats, as well as slotted.
- Maintains NEMA, UL and CSA 12, 4 and 4X ratings.
- Square and triangle inserts provide extra security since standard screw drivers cannot open.
- Keys sold separately from inserts.

| Part No. | Description |
|--------------|------------------------------|
| 2SQI7 | 7mm square insert, black |
| 2SQK7 | 7mm square key, fits 2SQI7 |
| 2TRI7 | 7mm triangle insert, black |
| 2TRK7 | 7mm triangle key, fits 2TRI7 |
| 2SLI | Slotted insert, black |



Replacement Quarter Turn Assemblies

- Field installable.
- Interchangeable with standard quarter turn latches on Eclipse or Eclipse Junior series.
- Maintains NEMA, UL and CSA ratings as noted.

| Part No. | Description | Series used with | Material | NEMA Rating |
|--------------------------|----------------------|-----------------------|---------------------|----------------------------|
| EQTRL¹ | Locking Qtr Turn | Swing Panel/ Frame | Zinc Die/ Chrome | n/a (internal use only) |
| 2QTR | Slotted Qtr Turn | Eclipse | Zinc Die/Black | 12, 4, |
| 2SSQTR | Slotted Qtr Turn | Eclipse | Stainless steel | 12, 4, 4X |
| 2WKL | Wing knob lock | Eclipse | Zinc Die/Black | 12, 4, |
| 2QPL | Padlockable Qtr Turn | Eclipse | Zinc Die/Black | 12, 4, |
| EJQTR | Slotted Qtr Turn | Eclipse Junior | Zinc Die/Black | 12, 4 |
| EJSSQTR | Slotted Qtr Turn | Eclipse Junior | Stainless Steel | 12, 4, 4X |

¹ For use with Swing Frame/Panel.



Eclipse Padlock Adaptor

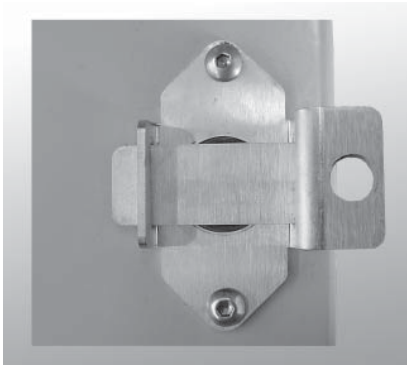
- For use with EN4SD Series Enclosures.
- Padlock adaptor fits directly over the slotted quarter turn preventing access.
- 14 gauge 304 stainless steel.
- Stainless steel mounting hardware provided
- Once installed, the bolts cannot be removed without the door open.
- Easy installed in the field.
- Padlock not included.
- Maintains UL/CSA Type 4, 4X rating.

| | |
|----------|------------|
| Part No. | EPA |
|----------|------------|

General Accessories

Hardware

Eclipse Junior Padlock Adaptor



- Padlock adaptor fits directly over the slotted quarter turn preventing access.
- 2mm thick 14 gauge stainless steel.
- Stainless steel mounting hardware provided.
- Once installed, the bolts cannot be removed without the door open.
- Easy installed in the field.
- Padlock not included.
- Maintains UL/CSA Type 4, 4X rating.

Part No. **EJPA**

Eclipse Junior Wing Knob



- For use with EJ Series only.
- Installs in place of the standard quarter turn lock.
- Internal "O" ring provides dust and water tight construction.
- Zinc Diecast/Black.
- Maintains UL/CSA Type 12 rating.

Part No. **EJWKL**

Oil Tight Hole Plugs



- Designed to seal unused pushbutton holes, conduit openings and knockout holes against dust, oil and water.
- Standard Pushbutton size is 30.5mm

Steel Hole Plugs

- Available in 12 sizes.
- Finished in gray.
- Oil resistant gasket.
- Secured with an 8-32 x .55" threaded stud and plated wing nut.

Stainless Steel Hole Plugs

- Available in 8 sizes.
- Finished in brushed natural stainless finish.
- Oil resistant gasket.
- Secured with an 8-32 x .55" threaded stud and plated wing nut.

Hole Plugs - Steel

| Part No. | Description | Diameter |
|----------|-----------------|----------|
| HP22 | 22mm Pushbutton | 1.22 |
| HP50 | .5" Conduit | 1.38 |
| HP75 | .75" Conduit | 1.63 |
| HPB | Std. Pushbutton | 1.75 |
| HP100 | 1" Conduit | 1.88 |
| HP125 | 1.25" Conduit | 2.25 |
| HP150 | 1.5" Conduit | 2.50 |
| HP200 | 2" Conduit | 3.00 |
| HP250 | 2.5" Conduit | 3.50 |
| HP300 | 3" Conduit | 4.14 |
| HP350 | 3.5" Conduit | 4.66 |
| HP400 | 4" Conduit | 5.19 |

Hole Plugs - Stainless Steel

| Part No. | Description | Diameter |
|----------|-----------------|----------|
| HP22SS | 22mm Pushbutton | 1.22 |
| HP50SS | .5" Conduit | 1.38 |
| HP75SS | .75" Conduit | 1.63 |
| HPBSS | Std. Pushbutton | 1.75 |
| HP100SS | 1" Conduit | 1.88 |
| HP125SS | 1.25" Conduit | 2.25 |
| HP150SS | 1.5" Conduit | 2.50 |
| HP200SS | 2" Conduit | 3.00 |